

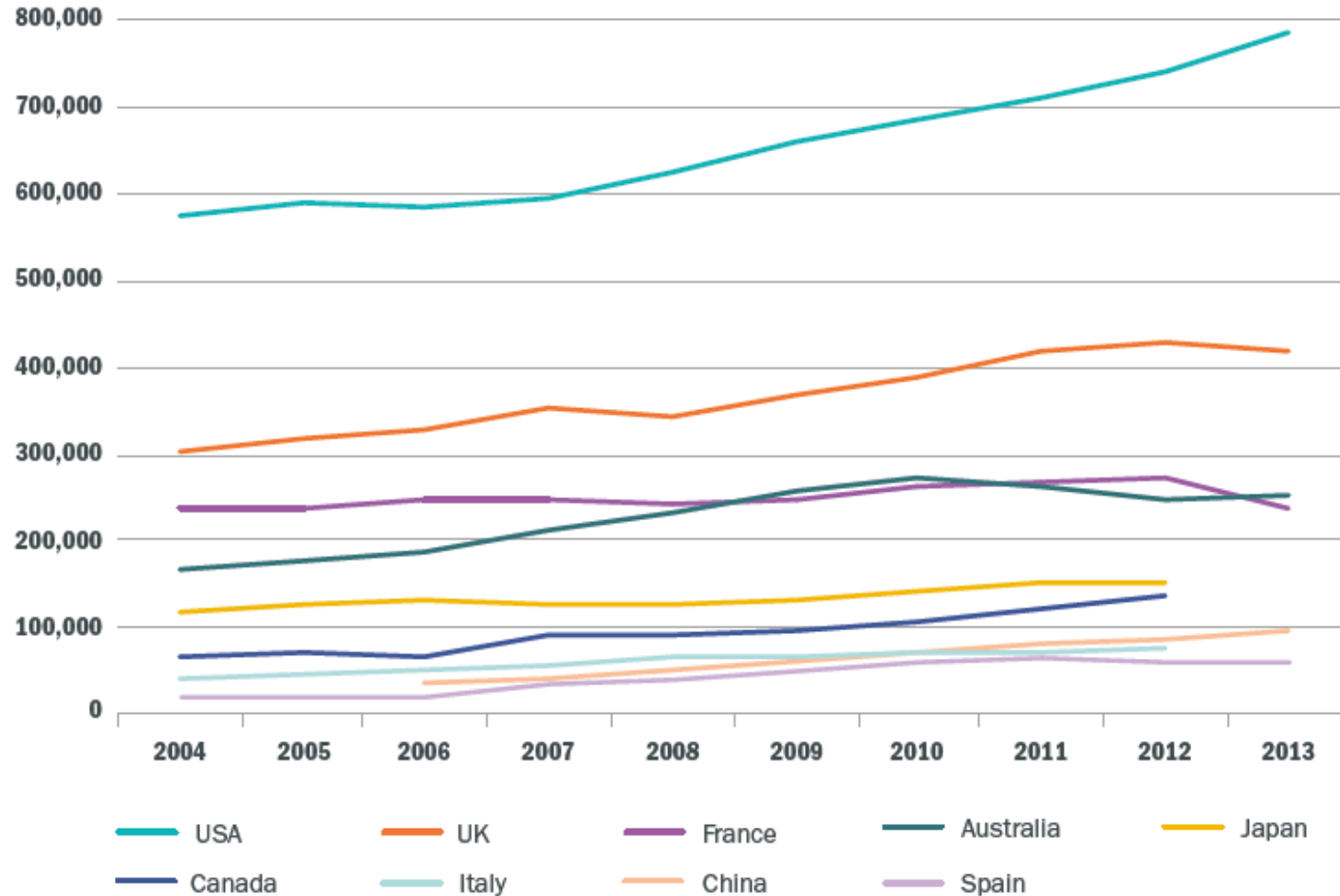
The international standing of UK universities

John O'Leary

Editor of The Times & Sunday Times Good University
Guide

Member of the Executive Board of QS World
University Rankings

International student numbers



Source: UNESCO Institute of Statistics Education database

International ranking methodologies

ARWU (2003)	QS (2004)	WEBOMETRIC S (2004)	THE (2010)
SIZE	INT'L STUDENTS INT'L FACULTY	EXCELLENCE	INNOVATION INTERNATIONAL
SCI/SSCI ARTICLES	CITATIONS PER FACULTY	OPENNESS	RESEARCH
NATURE & SCIENCE	FACULTY STUDENT	PRESENCE	CITATIONS
HICIS	EMPLOYER REPUTATION	IMPACT	TEACHING
FACULTY AWARDS	ACADEMIC REPUTATION		
ALUMNI AWARDS			

Representation in 3 main international rankings

	10	20	50	100	200	500		Population	Universities
US	6	13	26	40	63	124		321m	2968
UK	3	4	8	14	24	48		64m	133
Germany	0	0	1	6	15	37		80m	76
China	0	0	1	2	5	23		1367m	2236
Australia	0	0	2	4	8	23		24m	42
France	0	0	1	2	6	21		66m	91
Canada	0	0	2	4	7	20		35m	98
Japan	0	0	2	4	6	15		167m	770
Netherlands	0	0	0	6	11	13		17m	14-55
Switzerland	1	1	1	3	7	10		8m	12
Sweden	0	0	1	3	5	10		10m	14-27

UK universities over 4 years

OVERALL RANKINGS RESULTS



RANGE	2012		2013		2014		2015
1-100	18	●	18	●	19	●	18
101-200	12	●	11	●	10	●	12
201-300	8	●	8	●	7	●	9
301-400	7	●	8	●	8	●	9
401-500	5	●	5	●	4	●	3
501-600	3	●	5	●	6	●	5
601-700	2	●	6	●	3	●	5
701-800			8	●	11	●	9
OVERALL	57		72		73		75

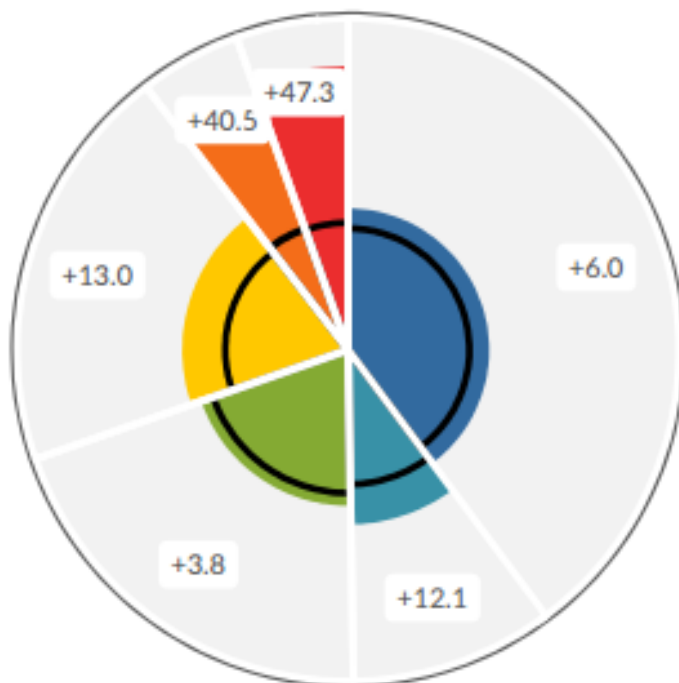
● improved

● unchanged

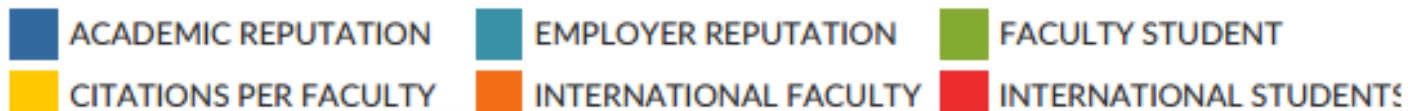
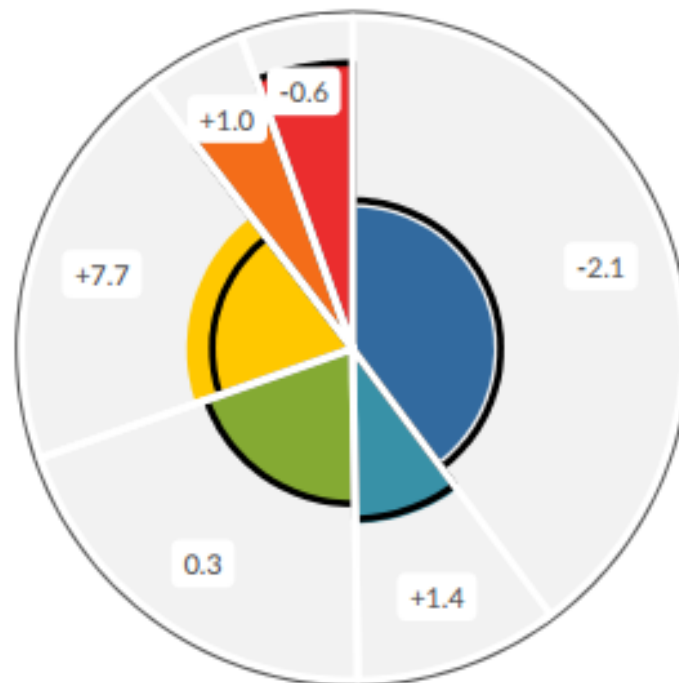
● declined

Performance on QS measures

United Kingdom vs. Global Average



United Kingdom - 2015 vs. 2014



QS ranking of system strength

S **SYSTEM**
Indexed score based on the collective performance of institutions in the QS World University Rankings®

A **ACCESS**
Score based on the number of places at ranked universities factored against the size of the population

F **FLAGSHIP**
Score based on the position of the top performing university in the country in the QS World University Rankings®

E **ECONOMIC**
An index based on the number of ranked universities factored against economic strength (GDP per capita)

		2011	2012	2013	2014	2015	
S	SCORE	98.7	98.6	98.9	98.7	98.6	2
	RANK	2	2	2	2	2	
A	SCORE	95.3	95.4	96.9	95.6	96.7	5
	RANK	5	6	6	6	5	
F	SCORE	100	99.9	99.8	99.9	99.8	2
	RANK	1	2	2	2	2	
E	SCORE	97.4	97.7	98.2	98.8	99	3
	RANK	4	4	4	3	3	

SAFE	SCORE	97.9	97.9	98.5	98.3	98.5	2
	RANK	2	2	2	2	2	

Thank You

John O'Leary

email: john@joleary.co.uk

Twitter: JohnOLEary33